

Winnebago County Local History/ Genealogical Resources at The Neenah Public Library



The Neenah Public Library can assist you with your genealogical research. The Library has local newspapers on microfilm for most years dating back to 1856. City directory coverage for Neenah/Menasha dates back to 1900. The library also has most phone books for the Neenah/Menasha area dating from 1913, the Federal Census on Ancestry.com, local and state histories, plat maps, and much more! If we do not have a particular book or resource that is needed for your research we may be able to obtain it for you through our Interlibrary Loan service. If you have any questions regarding our collection please ask for assistance at our Reference Desk or call 886-6315.

Newspapers

Menasha Conservator

May 14, 1856-March 17, 1860

Weekly Manufacturer

June 6, 1861-July 24, 1862

Island City Times

October 22, 1863-January 15, 1870

Winnebago County Press

January 22, 1870-December 30, 1871

Neenah Gazette

December 23, 1871-September 4, 1880

February 19, 1881-July 22, 1882

Neenah City News

October 16, 1875-January 29, 1876

Neenah City Times

February 5, 1876-December 29, 1883

June 28, 1884-December 6, 1884

Neenah Daily Times

August 8, 1882-December 30, 1882

July 2, 1883-December 31, 1883

June 28, 1884-December 16, 1884

January 1, 1885-May 17, 1919

Twin City News

February 11, 1895-May 14, 1895

Neenah News Times

May 19, 1919-December 31, 1943

The Daily News Times

January 3, 1944-December 31, 1949

Twin Cities News Record

January 1950-May 1984

Post-Crescent

1950-Current

Neenah Citizen

March 3, 1995-March 2003

Neenah-Menasha News-Record

2003-Current

Obituary Indexes

(Please ask for at the Reference Desk)

- May 14, 1856-March 17, 1860
- October 22, 1863-November 10, 1864
- 1872-May 24, 1893
- 1907-1910, 1912-1949 –Online database

(<https://sql.winnefox.org/vital/neenah/>)



Vital Records

(Please ask for at the Reference Desk)

- Index to Birth Records Winnebago County, Wisconsin, Winnebago Land Genealogical Society.
 - 929.3 W834b vol. 1 1831-1886
 - 929.3 W834b vol. 2 1887-1891
 - 929.3 W834b vol. 3 1892-1895
 - 929.3 W834b vol. 4 1896-1900
 - 929.3 W834b vol. 5 1901-1905
 - 929.3 W834b vol. 6 1906-1910
 - 929.3 W834b vol. 7 1911-1915
- Index to Death Records Winnebago County, Wisconsin, Winnebago Land Genealogical Society.
 - 929.3 W834i vol. 1 (1842-1897)
 - 929.3 W834i vol. 2 (1898-1912)
 - 929.3 W834i vol. 3 (1913-1927)
- Index to Divorce Records, Winnebago County, Wisconsin, 1850-1939, Winnebago Land Genealogical Society.
 - 929.3 P946i-d
- Index to Marriage Records, Winnebago County, Wisconsin, Winnebago Land Genealogical Society.
 - 929.3 P946i v.1 (1848-1874)
 - 929.3 P946i v.2 (1875-1891)
 - 929.3 P946i v.3 (1892-1903)
 - 929.3 P946i v.4 (1903-1912)



The Neenah Public Library also provides vital records indexes on microfiche. The indexes were compiled by the State of Wisconsin Department of Health and Family Services. Wisconsin vital records for the dates below can also be found on Ancestry.com. Please ask at the Reference Desk for the Microfiche.

- **Birth Index Microfiche**

- Pre-1907 Alphabetical Index
 - Pre-1907 Chronological Index

- **Death Index Microfiche**

- Pre-1907 Alphabetical
 - 1959-1979 Alphabetical
 - 1979-1997 Alphabetical

- **Marriage Index Microfiche**

- Pre-1907 Alphabetical (Adams-Price Co.)
 - 1973-1978 Groom
 - 1979-1997 Groom
 - 1973-1978 Bride
 - 1979-1997 Bride

- **Divorce Index Microfiche**

- 1965-1984 Alphabetical



Cemetery Records

- **Oak Hill Cemetery**

Oak Hill Cemetery is owned and maintained by the City of Neenah since 1848, it is the second oldest municipal cemetery in the United States. The City of Neenah maintains a searchable burial records database, which can be found at:

<http://www3.ci.neenah.wi.us/prod/BurialInquiry.php>

Records can also be obtained by calling 920-886-6144, or by stopping at the Treasurer's Office at the City Administrations Building, 211 Walnut St.

- **St. Patrick's Historic Cemetery**, Martin, Sylvia Shea, St. Patrick's Parish, 1997. 929.5 Sa24 LH

City Directories

The library has Neenah/Menasha City Directories for the following years:

1900, 1905

1910, 1914

1920, 1924, 1928

1931, 1934, 1937, 1939 (due to poor condition, the 1930's directories can be found online at the Neenah Public Library Local History Digital Collection).

1940, 1942, 1944, 1946, 1948

1950, 1952, 1954, 1956, 1958, 1959

1960, 1961, 1962, 1964, 1965, 1967, 1968, 1969

1970, 1972, 1973, 1974, 1975, 1976, 1977, 1979

1980, 1982, 1983, 1984, 1985, 1986, 1988, 1989

1990, 1991, 1992, 1993, 1997, 1998, 1999

2000, 2002-Current



Federal Census

The Federal Census can provide valuable information for the genealogical researcher. The Federal Census, selected non-population schedules, and selected Wisconsin State Census can be found on Ancestry.com (library in-house use only) and HeritageQuest. The Neenah Public Library also has the Federal Census for Winnebago County on microfilm, 1840-1880 and 1900-1930. The 1890 census for most of the United States including Wisconsin is not available due to a fire that destroyed most of the records. The library does not have 1940 census on microfilm, however it can be found on Ancestry.com and HeritageQuest.

Neenah/Menasha Histories

- **The emerging Cities: Menasha, Neenah: Stories of the 19th Century.** Citizen Printing & Publishing Co., 1998.
977.564 N293
- **Factories in the Valley: Neenah-Menasha, 1870-1915.** Glaab, Charles N., State Historical Society of Wisconsin, 1969.
977.54 G45

- **A History of Neenah.** Shattuck, S.F., 1958.
977.54 Sh2
- **History of Neenah, Illustrated: Being a Complete Historical Sketch from the “Early Days to the Present Time.** Cunningham, G.A., Gazette Printing Establishment, 1878.
977.54 C91
- **Memories of Doty Island: A Link Between Two Cities.** Herziger, Caryl Chandler, 1999.
977.564 M519
- **Millstone and Saw: the Origins of Neenah-Menasha.** Smith, Alice E., State Historical Society of Wisconsin, 1966.
977.54 Sm51
- **The Parks of Neenah: An Historical Interpretation.** Dunwiddie, William E., Neenah Park and Recreation Commission, 1993.
977.564 D923p
- **A Tale of Twin Cities: or the Development of the Fox River Waterway.** Neenah Historical Society, 1993.
977.564 T143

County Histories

- **History of Winnebago County, Wisconsin, and Early History of the Northwest.** Harney, Richard J., 1880.
Local Hist 977.564 H22
- **The History of Winnebago County & the Fox River Valley, 1541-1877.** Thwaites, Reuben Gold. The County, 1984.
Local Hist 977.56 T428h
- **History, Winnebago County, Wisconsin: Its Cities, Towns, Resources, People.** Lawson, Publius V., 1908. Local Hist 977.564 L44, 2 vols.
- **In This Century: A History of Winnebago County in the 20th Century.** Engel, Dave., New Past Press, 1998.
Local Hist 977.564 In1

Regional & Local Histories

- **History of Northern Wisconsin, Containing an Account of its Settlement, Growth, Development, and Resources.** Western Historical Company, 1881.
Local Hist 977.5 W52

- **History of the Fox River Valley, Lake Winnebago, and the Green Bay Region.** Titus, William A., S.J. Clarke Pub. Co., 1930.
Local Hist 977.56 H629, 3 vols.
- **History of the Town of Clayton Winnebago County, Wisconsin.** Winchester Area Historical Society. AmeriPrint Graphics Inc., 1999.
Local Hist 977.564 C579
- **History of the Town of Winchester Winnebago County, Wisconsin.** Winchester Area Historical Society. Rogers Publishing, 2002.
Local Hist 977.564 W721
- **Town of Menasha Sesquicentennial : 1855-2005.** Weber, Jason R., Ameriprint Graphics, 2006..Local Hist 977.564 T66
- **Town of Wolf River Winnebago County, Wisconsin, History 1855 to 2005.** Town of Wolf River. Rogers Publishing, 2005.
Local Hist 977.564 T66
- **The Winnebago-Horicon basin: a Type Study in Western History.** Schafer, Joseph., state Historical Society of Wisconsin, 1937.
Local Hist 977.56 Sch1w

Civil War Soldiers of Winnebago County

- **Civil War Veterans of Winnebago County, Wisconsin, Volume 1, A-H.** Langkau, David A., Heritage Books Inc., 1993.
Local Hist 973.76097756 L265c
- **Civil War Veterans of Winnebago County, Wisconsin, Volume 2, I-T.** Langkau, David A., Heritage Books Inc., 1994.
Local Hist 973.76097756 L265c

Plat Maps

- **Illustrated Atlas of Winnebago County, Wisconsin.** Randall, George A., 1889.
Local Hist 917.75 IL5w
- **Map and Plat Book of Winnebago County Wisconsin.** Gorman & Soudea, 1909. Local Hist 912.77564 M32 1909
- **Atlas of Winnebago County, Wisconsin.** W.W. Hixson & Co., 1928.
Local Hist 912.77564 At65

The library also has plat maps for the following years: 1963-1966, 1972, 1974, 1976, 1978, 1980, 1983, 1989, 1991, 1993, 1995, 1997, 2001, 2007, 2016.

Neenah High School Yearbooks

Neenah High School Yearbooks are located in the Local History Room, under the call number Local Hist 370 R591. The library has the following years: 1919-1920, 1922, 1928, 1932, 1937-2014, 2016.

Digital Collection

Several of our most popular local history titles and much of the NPL photograph collection are available on the Internet. A few titles in the collection include:

- **History of Neenah, Illustrated** by G.A. Cunningham (1878).
- **A History of Neenah** by S.F. Shattuck (1958).
- **Neenah Historical and Architectural Survey Project** by Peter Adams (1982)
- **Sterling's Neenah/Menasha City Directory 1920-1921.**
- **Wright's Neenah/Menasha City Directory 1924.**
- **400 Photographs from the Local History Collection.**

The ***Neenah Public Library Digital Collection*** is part of the University of Wisconsin-Madison State of Wisconsin Digital Collection. Other local library collections that are also part the UW collection include:

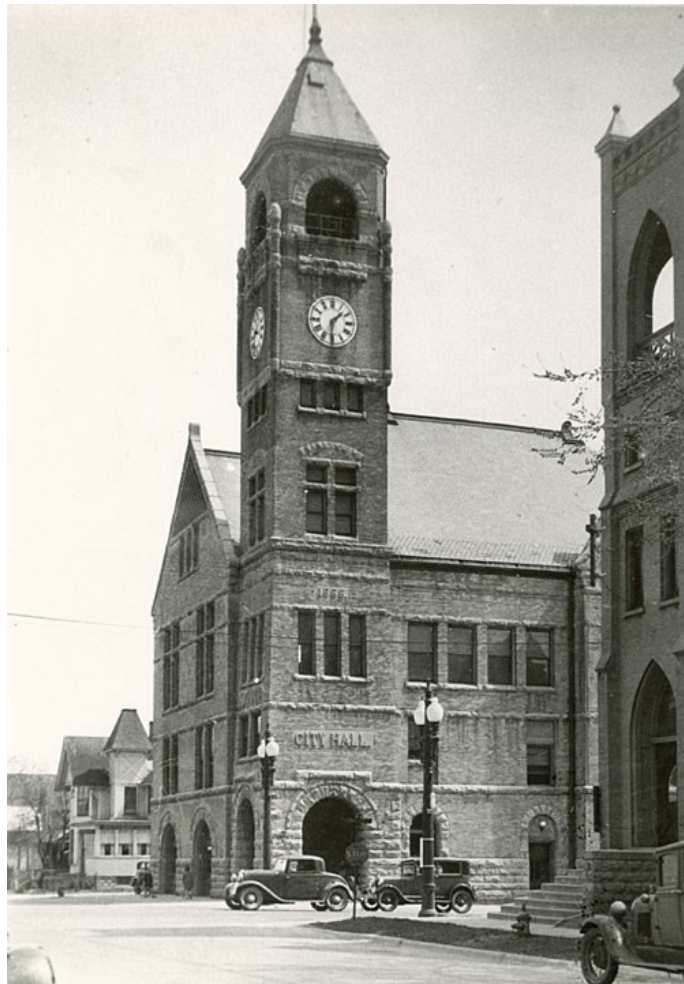
- Appleton Public Library
- Fond du Lac Public Library
- Menasha Public Library
- Oshkosh Public Library

The Neenah collection can be found at:

<https://www.neenahlibrary.org/resources/localhistory>

Research Guide

- **A Research Guide to Winnebago County, Wisconsin, Rev. ed., 2009.** Protz, Ruth Liskow. The Society, 2009.
929.377564 P946r 2009



Neenah Public Library

240 E. Wisconsin Avenue

Neenah, Wisconsin 54956

920-886-6315~library@neenahlibrary.org

www.neenahlibrary.org